

## Discover Haggerston Walk



### 1 Geffrye Museum

1714

136 Kingsland Road

The Geffrye Museum is one of the oldest existing buildings in Shoreditch and remains beautifully intact. Its history as an almshouse and a museum is an important part of the history of Shoreditch and Hackney as a whole. It has been a prominent feature of the the neighbourhood since its erection and is still one of the most recognisable buildings.



### 2 125-130 Shoreditch High Street

1887

The head quarters of cabinet Iron mongers Wells & Co. Built with a foundry and showroom. This is a wonderful example of how the furniture trade in Victorian Haggerston has left a permanent mark on the areas architecture. This is a large and distinctive building, in a prominent position.



### 3 St Leonards Church

1736

Shoreditch High Street

There has been a church here since the 12th century - it is an integral part of the history of Shoreditch, Haggerston and London. It has played its part in poor relief; distributing 50 loaves of bread to the poor every Sunday up until 1870, and as a place of worship. Also the final resting place of Richard Burbage (1567-1619).

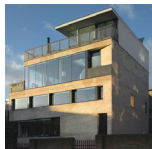


### 4 Cleeve House

1895-99

Calvert Avenue

The 1901 Census under part of Calvert Avenue 2-20 RG/13 269 46 gives us an entry with people with the following profession; furniture makers, upholsterers, tailors, book menders, bread maker, drapers assistant etc people with talent in the field of fashion, furniture and other hands on activities, making it a lively area with creative working people.



### 5 Bateman's Row

2010

20-24 Batemans Row

Designed by architects Theis and Khan and shortlisted for Stirling Prize 2010. Combining homes, an office and a gallery. Elements of the design were generated through the golden section ratio of 1:1.618, ensuring a harmonious composition. This building "revels in setting up rules and then breaking them."



### 6 43-49 Charlotte Road

1887-81

Furniture workshop. A Group of originally seven furniture workshops/warehouses, now workshops, offices and shops. Developed in stages between 1877-1881, with minor C20 modifications, for John King Farlow.



### 7 Tram Shed

1905

32 Rivington Street

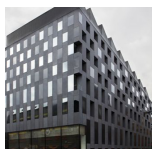
This building was built as an Electricity Generating Substation and Transformer station for the tramway system. It is now home to a Mark Hix restaurant.



### 8 134-146 Curtain Road

1877

C&R Light was one of the best known Shoreditch wholesale furniture dealers and manufacturers. Their substantial showrooms at 134-146 Curtain Road were built between 1881 & 1887 to the design of Richard Creese Harrison. The building still dominates the northern end of the street and has since had a variety of uses and occupants.



### 9 INIVA

2007

1 Rivington Place

Iniva (Institute of International Visual Arts) was designed by architect David Adjaye. The building houses exhibition, work, learning and meeting spaces, aresearch library, multimedia facility, photography archive, and a café. It is the first publicly funded build of its kind in 40 years.



### 10 Court House & Police Station

1908

Built in the Edwardian Baroque style, the court house and police station is one of the finest Edwardian civic buildings in London.

The architecture of this building renders it a high level of importance, as demonstrated by its places on English Heritage's 'at risk' listing.



### 11 Shoreditch Town Hall

1964

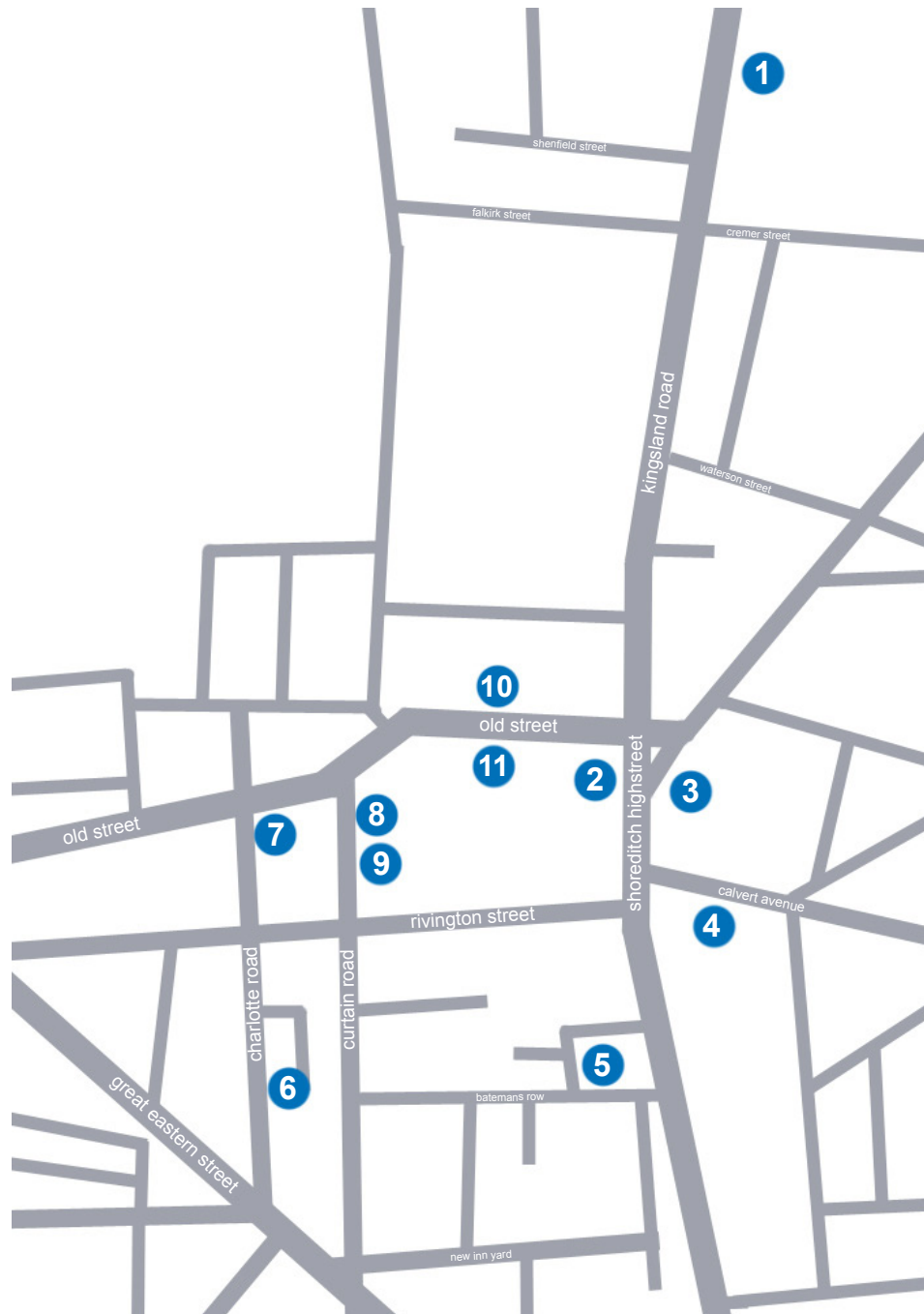
A beautiful, imposing building which is a key part of the Shoreditch landscape. Its role has changed over the years, from a Town Hall to an arts hub but it has maintained its position of importance to the community throughout. As a result of a recent campaign the building will undergo a £1.6 million transformation to convert it into an arts theatre and thus maintaining its position at the heart of Shoreditch.

## Discover Haggerston Walk

This walk is designed to start from the Geffrye Museum and lead you on a tour of some of the listed buildings of the southern part of Haggerston, ending at Shoreditch Town Hall. The walk is approximately 1.5-2 miles and will take around an hour and a half.



If you would like to take a slightly longer walk you can use the Listed Haggerston Map to guide you round some more listed buildings nearby. You can scan the QR code to access the map, or visit [www.buildingexploratory.org.uk/listedhaggerston](http://www.buildingexploratory.org.uk/listedhaggerston)



1



2



3



4



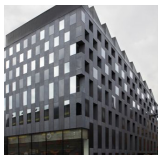
5



11



10



9



8



7



6

MY HAGGERSTON

mail@buildingexploratory.org.uk 020 7608 0775

Charity number 1077600, company number 3684034

